

A new *Aphodius* species of the subgenus *Sinaphodius* from Nepal (Coleoptera, Aphodiidae, Aphodiinae)

Paul Schoolmeesters & Roger Van den Heuvel

Samenvatting. Een nieuwe soort *Aphodius* uit het subgenus *Sinaphodius* uit Nepal (Coleoptera: Aphodiidae, Aphodiinae)
Uit Nepal wordt *Aphodius* (*Sinaphodius*) *chitwanensis* beschreven.

Résumé. Une nouvelle espèce d'*Aphodius*, sous-genre *Sinaphodius* du Népal (Coleoptera: Aphodiidae, Aphodiinae)

La nouvelle espèce *Aphodius* (*Sinaphodius*) *chitwanensis*, est décrite du Népal.

Key words: Coleoptera – Aphodiidae – Nepal – new species

Schoolmeesters, P.: Langeveldstraat, 23, B-3020 Herent e-mail: schoolp@glo.be

Van den Heuvel, R.: St. Maartensdal 1/404, B-3000 Leuven.

The first author collected two female specimens of *Aphodius* Illiger, 1798 on a trip to Nepal during 1998, on the sandy river bank of the Narayna River near the Island Resort lodge of Chitwan National Park, altitude 150 m. They belong to the subgenus *Sinaphodius* Cervenka, 1994 and are described hereafter.

Aphodius (*Sinaphodius*) *chitwanensis* n. sp.

Holotype ♀ and 1 paratype ♀: Nepal, Royal Chitwan N. P., Island resort, 17–18.11.1998, leg. P. Schoolmeesters. Holotype and paratype in the author's collection, Herent, Belgium.

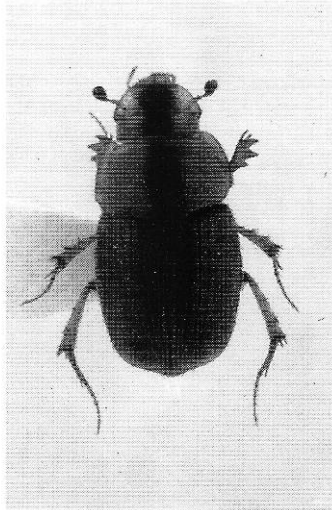
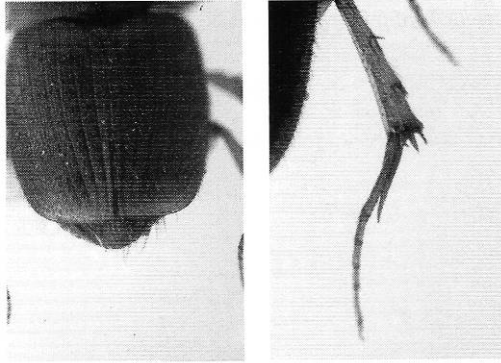


Figure 1: *Aphodius* (*Sinaphodius*) *chitwanensis* n. sp., holotype ♀, Nepal, Royal Chitwan N. P., Island resort, 17–18.11.1998, leg. et coll. P. Schoolmeesters.



Figs. 2–3: *Aphodius* (*Sinaphodius*) *chitwanensis* n. sp., holotype ♀, Nepal, Royal Chitwan N. P., Island resort, 17–18.11.1998, leg. et coll. P. Schoolmeesters, 2. detail of abdomen – 3. left hind leg.

Female. Length: 5.1–5.3 mm. Brown, head yellow translucent with longitudinal black spot in the middle, anterior angles of pronotum yellowish, legs and elytral apex yellow. Antennal club black. Pubescent, with head and pronotal disk glabrous, elytra with recumbent rather long hairs. Head, semicircular, clypeus truncate, frontal suture only indicated, between the anterior margin of the eyes. Punctuation of the head simple, sparse. Genae slightly produced beyond the eyes and rounded. Pronotum transverse, broader as the elytral base. Anterior angles rounded, posterior angles widely truncate, deeply emarginate, posterior margin slightly sinuate. Anterior and posterior margin not bordered. Lateral sides with rather thick border and densely fimbriate. Pronotal punctures sparser and smaller anteriorly and on disk. Scutellum small, triangular, not parallel on basis, punctate. Elytra apically truncate, pygidium exposed. Inner and outer margin of elytral intervals not crenate by striae punctures. Elytral intervals apically disconnect. Humeral tubers of elytra denticulate. Epipleura separated from elytra by a deep groove and by a distinct keel. Anterior tibiae with 3 teeth on outer side, from tooth towards base crenulate, apical spur of anterior tibiae long, acuminate and curved outwards. Upper terminal spur of hind tibia as long as metatarsus, the latter longer as the next three segments combined, nearly as long as the remaining segments combined. Apical bristles of hind tibiae unequal in length. Abdominal sternites and pygidium with long setae. Epipharyngeal characters not studied.

Male unknown.

This new species is probably closely related to *Aphodius* (*Sinaphodius*) *yunnanus*, with which it can be confused. Differences between *yunnanus* and *chitwanensis* are:

	<i>A. yunnanus</i>	<i>A. chitwanensis</i> n. sp.
Clypeus	more convex	more flat
Head	distinctly pubescent	glabrous
Genae	more pronounced	rounded
Pronotum	-setae longer, denser, more or less, erect and bent backwards -anterior angles sharp -posterior angles more deeply truncate -punctuation great, dense, coarse nearly adjacent	-setae recumbent, less dense -anterior angles less sharp -posterior angles less truncate -punctuation much finer; more sparse
Elytra	-pubescence longer and denser, more erect, lighter (yellowish) -punctuation greater, less dense -shiny -striae distinctly punctate -intervals more or less convex -punctuation of the intervals more or less in three rows, more distinct and greater	-pubescence less erect, darker (brownish) -punctuation smaller, less distinct between the microreticulation, more dense -less shiny (nearly mat) -striae hardly punctate -intervals flat -punctuation of the intervals smaller, indistinct, lost in the microreticulation

Acknowledgements

I wish to express my sincere gratitude to David Kral for directing me to the right subgenus. Special thanks are extended to Alberto Ballerio for the loan of a paratype of *Aphodius yunnanus*, and to Alain Pauly (K.B.I.N. Brussels) for making the photographs.

Reference

Cervenka, R., 1994. Contribution to the knowledge of Aphodiidae II. New subgenus and two new species of genus *Aphodius* Illiger. — *Folia Heyrovskyana* 2(8): 111–115.