

Records of some rare moths (Lepidoptera) in the Rostov-on-Don area (Russia) in 2006

A. N. Poltavsky, A. Yu. Matov & Yu. A. Silkin

Abstract. Seven rare moth species were caught in the Rostov-on-Don area during the field-season 2006: *Heterolocha laminaria* (Herrich-Schäffer, 1852), *Ostrinia palustralis* (Hübner, 1796), *Caradrina vicina* (Staudinger, 1870), *Noctua janthe* (Borkhausen, 1792), *Eublemma parva* (Hübner, [1808]), *Conistra rubiginosa* (Scopoli, 1763), and *Luperina testacea* ([Denis & Schiffermüller], 1775).

Samenvatting. Over de vondst van enkele zeldzame motten (Lepidoptera) in de streek van Rostov-on-Don (Rusland) in 2006

Zeven zeldzame Lepidoptera-soorten werden tijdens 2006 in de streek van Rostov-on-Don (Rusland) waargenomen: *Heterolocha laminaria* (Herrich-Schäffer, 1852), *Ostrinia palustralis* (Hübner, 1796), *Caradrina vicina* (Staudinger, 1870), *Noctua janthe* (Borkhausen, 1792), *Eublemma parva* (Hübner, [1808]), *Conistra rubiginosa* (Scopoli, 1763) en *Luperina testacea* ([Denis & Schiffermüller], 1775).

Résumé. Sur l'observation de quelques hétérocères rares (Lepidoptera) dans la région de Rostov-on-Don (Russie) en 2006

Sept espèces rares d'hétérocères furent observées pendant 2006 dans la région de Rostov-on-Don (Russie): *Heterolocha laminaria* (Herrich-Schäffer, 1852), *Ostrinia palustralis* (Hübner, 1796), *Caradrina vicina* (Staudinger, 1870), *Noctua janthe* (Borkhausen, 1792), *Eublemma parva* (Hübner, [1808]), *Conistra rubiginosa* (Scopoli, 1763) et *Luperina testacea* ([Denis & Schiffermüller], 1775).

Key words: rare species – monitoring – Faunistics – Rostov-on-Don area – North Caucasus – Noctuidae – Geometridae – Crambidae.

Poltavsky, Dr. A. N.: Botanical Garden of the Southern Federal University, Rostov-on-Don region, Russia. poltavsky54@mail.ru.

Matov, Dr. A. Yu.: Zoological Institute of the Russian Academy of Sciences, Sankt-Petersburg. lepid@zin.ru.

Silkin, Yu. A. – Rostov-on-Don, amateur collector.

A brief review of the history of lepidopteran faunal studies in the Rostov-on-Don area were presented with a new scientific approach to the research of the biodiversity of advanced agricultural regions (Poltavsky 2005). Special attention must be paid to the identified entomological refuges of the regional entomofauna. We intensively continued this work during the field season of 2006 and carried out monitoring both butterflies (Rhopalocera) and moths (Heterocera). Thus, we carried out regular moths catches with light-traps equipped with mercury lamps "Osram" 160 W or DML 500 W, during altogether 52 nights from mid-April up to the end of October in 10 localities.

The regional fauna of the moths is still substantially unexplored. Data on such large families like Geometridae, Pyralidae, and Tortricidae are fragmentary and absolutely incomplete. The family Noctuidae is the best studied of all Heterocera, and 413 species have been recorded up to now. Despite of our long time ongoing faunal studies (from 1972), some new species are nevertheless found each year in the Rostov-on-Don area.

In this paper we present some of the most interesting observations on moths during the field season 2006. Most species are specific representatives for the natural habitats in South-East Europe. These data can be suitable for future zoogeographic studies.

Abbreviation: ZIN = Zoological Institute of the Russian Academy of Sciences, St.-Petersburg.

Crambidae

Ostrinia palustralis (Hübner, 1796) – transpalearctic, forest mesophyllous.

Larval food plants: *Rumex* spp.

Rostov-on-Don area: 1. Ust-Donetz dist., v. Nizhne-Kundrjuchenskaja, 25.07.2006, 1 ex.; 2. Taganrog (ZIN: S. N. Alpheraky).

Nearest localities in the south of Russia, Krasnodar area: 1. Labinsk dist., v. Ereminskaja 16.08.1998; 2. t. Krasnodar, 12.06.1996; 3. v. Guamka, 500 m a.s.l., 07.08.2006. Adigei Republic; 4. v. Shuntut, 27.07.2006 (V. Shchurov). North Ossetia republic: vicinity of Vladikavkaz, 21.05.1921 (ZIN: A. Stokalich), 05–11.06.1921 (ZIN: M. A. Rjabov).

Status: first record from the Rostov-on-Don area.

Geometridae

Heterolocha laminaria (Herrich-Schäffer, 1852) (= *Hypoplectis laminaria*) – East-Palaeartic, forest mesophyllous.

Larval food plants: *Salix* spp., *Corylus* spp.

Rostov-on-Don area: 1. Ust-Donetz dist., v. Konygin, 21.07.2006, 1 ex.; 2. Mjasnikovskij distr., Donskoj Tchulek, 26.08.2006, 2 ex.

Nearest localities in the south of Russia, Krasnodar area: 1. v. Kamishanova glade, 1200–1600 m a.s.l., mixed wood, 13.06.1999 (V. Shchurov); 2. Caucasus nature reserve, 1420–1940 m a.s.l., mixed wood, 14.07.2004 (Shchurov 2004). Karachai-Cherkess Republic: vicinity of Arkhyz, 16.07.1939 (ZIN: A. M. Djakonov).

Transcaucasus: Abkhazia (Miljanovsky 1964), Lagodekhi, Borzhomi, Armenia (ZIN); Turkey: Artvin (ZIN); Syria (ZIN); Iran: Astrabad (ZIN).

Status: first records from Europe.

Noctuidae

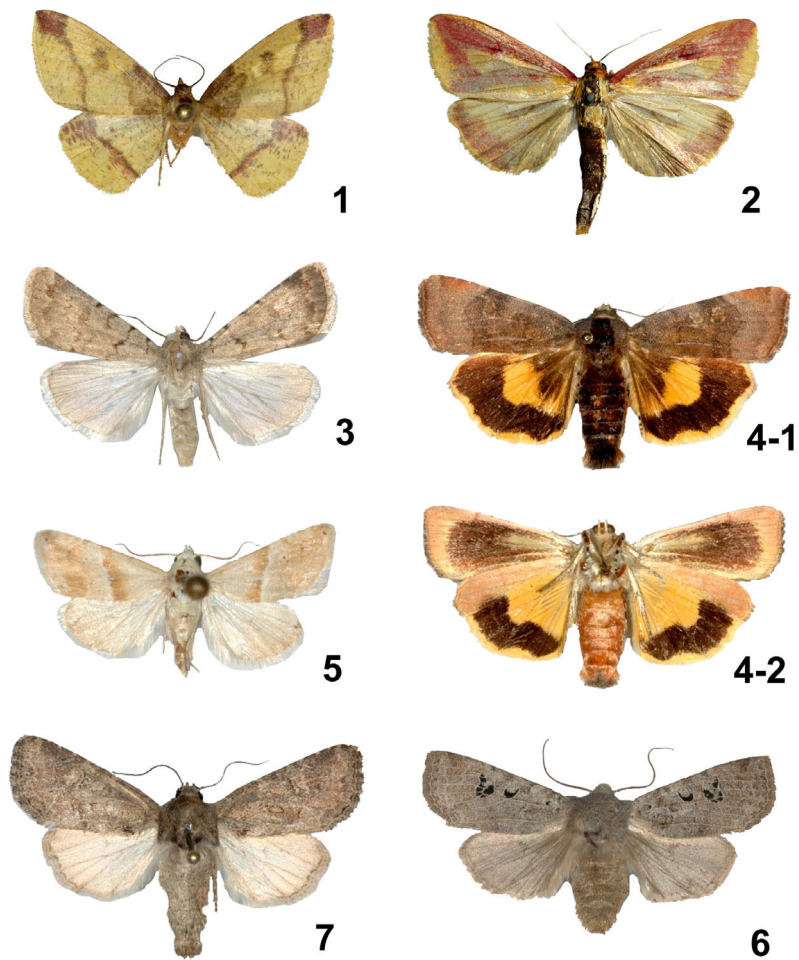
Caradrina vicina (Staudinger, 1870) – East-Mediterranean, xerophyllous.

Larval food plants: *Medicago* spp.

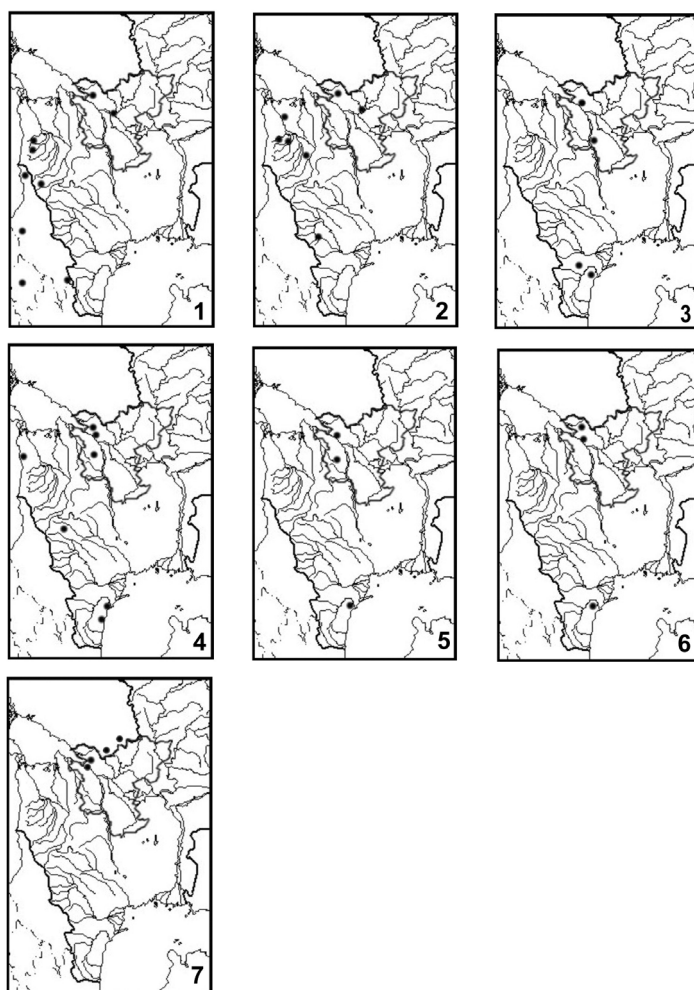
Rostov-on-Don area: 1. Orlovskij dist., v. Volotchaevskij, 10.09.2006, 1 ex.; 2. Bagaevskij distr., v. Kalinin, 22–27.09.2006, 3 ex.

Nearest localities in the south of Russia, Daghestan Republic: 1. v. Kumtor-Kale, 24.12.1945, 1 ex. (ZIN); 2. Gertma, 15.07.2001, 1 ex. (Poltavskij & Ilyina 2002, 2003).

Status: first records from the European part of Russia.



Figs. 1–7. Moths observed in the Rostov-on-Don area during 2006; 1.– *Heterolocha laminaria* (Herrich-Schäffer, 1852); 2.– *Ostrinia palustralis* (Hübner, 1796); 3.– *Caradrina vicina* (Staudinger, 1870); 4-1.– *Noctua janthe* (Borkhausen, 1792) (upperside); 4-2.– *Noctua janthe* (Borkhausen, 1792) (underside); 5.– *Eublemma parva* (Hübner, [1808]); 6.– *Conistra rubiginosa* (Scopoli, 1763); 7.– *Luperina testacea* ([Denis & Schiffmüller], 1775).



Figs. 1–7. Localities of rare moths in the south of Russia; 1.– *Heterolocha laminaria* (Herrich-Schäffer, 1852); 2.– *Ostrinia palustralis* (Hübner, 1796); 3.– *Caradrina vicina* (Staudinger, 1870); 4–1.– *Noctua janthe* (Borkhausen, 1792) (upperside); 4–2.– *Noctua janthe* (Borkhausen, 1792) (underside); 5.– *Eublemma parva* (Hübner, [1808]); 6.– *Conistra rubiginosa* (Scopoli, 1763); 7.– *Luperina testacea* ([Denis & Schiffmüller], 1775).

Noctua janthe (Borkhausen, 1792) – Mediterranean, mesophyllous.

Larva polyphagous.

Rostov-on-Don area: 1) Mjasnikovsky distr., Donskoj Tchulek, 11.09.2006 (2 ex.); 2) Bagaevsky distr., v. Kalinin, 29.09.2006 (1 ex.); 3) Salsky dist., v. Giant, 15.08.2006 (4 ex).

Nearest localities in the south of Russia: Stavropol area: 1) t. Pjatigorsk, 23.07.1938 (1 ex.), 27.09.40 (1 ex.); Krasnodar area: 2) v. Djubga, 17.07.1973 (1 ex.); Daghestan republic: 3) t. Derbent, 07.07.1927; 4) t. Mahatchkala, 17.07.1926 (ZIN: M.A. Rjabov).

Status: first records from the Rostov-on-Don region and North Caucasus.

Eublemma parva (Hübner, [1808]) – mediterranean, hemixerophyllous.

Larval food plants: *Helichrysum* spp., *Centaurea* spp., *Inula* spp., *Carduus* spp., *Carlina* spp., *Gnaphalium* spp., *Pulicaria* spp.

Rostov-on-Don area: 1) Oktjabirsky distr., v. Bessergenevskaja, 21.07.2006 (2 ex.); 2) Salsky dist., v. Giant, 15.08.2006, (2 ex.).

Nearest localities in the south of Russia, Daghestan Republic: Kaptchugaj (ZIN: M.A. Rjabov) (Poltavsky & Ilyina 2003).

Status: first records from the Rostov-on-Don region.

Conistra rubiginosa (Scopoli, 1763) – mediterranean, hemixerophyllous.

Larval food plants: leaves of *Quercus* spp., *Salix* spp., *Ulmus* spp., *Padus* spp., *Prunus* spp., *Rhamnus* spp., *Veronica* spp., *Plantago* spp.

Rostov-on-Don area: 1) Rodionovo-Nesvetajsky distr., v. Bolshekrepinskaja, 17–27.04.2006 (4 ex.); 2) Aksay distr., v. Rasswet, 03.04.2006 (1 ex.); 3) Bagaevsky distr., v. Kalinin, 23.04.2006 (2 ex.).

Nearest localities in the south of Russia, Daghestan Republic: 1) v. Tarki, 23.04.1933, 22.02.–5.03.1941; 2) aul Alty-Buyn, 10.03.1941 (ZIN: M. A. Rjabov) (Poltavsky & Ilyina 2003). Astrakhan area: Bogdo-Baskunchak reserve, Bol'shoj Kordon district, 23.10.2005 (ZIN: S. Nedoshivina).

Status: first records from the Rostov-on-Don region.

Luperina testacea ([Denis & Schiffermüller], 1775) – European, mesophyllous.

Larval food plants – Gramineae.

Rostov-on-Don area: Mjasnikovsky distr., Donskoj Tchulek, 31.08.2006 (1 ex.); v. Rogozhkino, Azov distr., 01–17.09.2007 (5 ex.).

Nearest localities: east Ukraine (Klyutchko *et al.* 2006).

Status: the most eastern localities in Russia and the first ones for the Northern Caucasus.

References

Alpheraky, S. N. 1908. Lepidoptera of the Taganrog Region. Addition III. — *Annales of the Russian entomological Society*, St.-Peterburg **38**: 619–627 (in Russian).

- Anikin, V. V., Sachkov, S. A., Zolotuhin, V. V. & Sviridov, A. V. 2000. "Fauna lepidopterologica Volgo-Uralensis" 150 years later: changes and additions. 5. Noctuidae (Insecta Lepidoptera). — *Atalanta* 1/2: 327–367.
- Klyuchko, Z. F., Matov, A. Yu. & Severov, I. G. 2006. The noctuid fauna (Lepidoptera: Noctuidae s.l.) of the Lugansk area (Ukraine). — *Eversmannia* 5: 24–35 (in Russian).
- Miljanovsky, E. S. 1964. Lepidoptera fauna of Abkhazia. — *Annales of the Sukhumi experimental station of essential-oil cultures* 5: 91–190 (in Russian).
- Poltavsky, A. N. 2005. Concept for preservation of the Lepidoptera biodiversity in agrolandscapes. — *Phegea* 33(4): 145–150.
- Poltavsky, A. N. & Ilyina, E. V. 2002. The Noctuidae (Lepidoptera) of the Daghestan Republic (Russia). — *Phegea* 30(1): 11–36.
- Poltavsky, A. N. & Ilyina, E. V. 2003. The Noctuidae (Lepidoptera) of the Daghestan Republic (Russia). II. — *Phegea* 31(4): 167–181.
- Shchurov, V. I. 2004. Additions to the Lepidoptera fauna (Insecta, Lepidoptera) of the Caucasian State Natural Biosphere Reserve and adjoining territories. — *Annales of the III International scientific conference. Biological variety of Caucasus*, Nalchik 1: 222–245 (in Russian).
-