

# A new species of *Paragus* Latreille, 1804 from Turkey (Diptera: Syrphidae)

Guy Van de Weyer

**Samenvatting.** Een nieuwe soort *Paragus* uit Turkije (Diptera: Syrphidae) *Paragus altomontanus* sp.n. wordt beschreven van het Taurus en het Pontisch gebergte. Een lijst met alle Turkse *Paragus*-soorten wordt gegeven.

**Résumé.** Une nouvelle espèce de *Paragus* de Turquie (Diptera: Syrphidae) *Paragus altomontanus* sp. n. est décrite des monts Taurus et Pontiques. Une liste des espèces turques du genre *Paragus* est donnée.

**Key words:** *Paragus altomontanus* sp. n. – Syrphidae – Turkey

Van de Weyer, G.: Pieter Breughellaan, 26, B-2840 Reet (Rumst), Belgium.  
guido.vandeweyer@skynet.be

## Introduction

All the species of the genus *Paragus* Latreille, 1804 are small flies, the larvae of which are aphid predators. The last revision of the West Palaearctic species was published by Goeldlin de Tiefenau (1976) and since then a further 13 species have been described (Stănescu 1977, 1981, 1991, 1992, Goeldlin de Tiefenau & Lucas 1981, Kaplan & Thompson 1981, Simič 1986, Marcos-Garcia 1986, 1994, Claussen 1989, Hayat & Claussen 1997, Van de Weyer 2000). Together with a record of *P. cinctus* Schiner & Egger, 1853 (Suvarihalil Geçidi, prov. Hakkari, 1 female on 17.VI.2006, 2021 m, leg. J. Dils & J. Faes) and the new species described hereafter, 19 species of *Paragus* are recorded from the Turkish mainland since 1976 (see checklist).

## *Paragus altomontanus* sp. nov.

Type material. Holotype ♂: Turkey, Erzurum province, Bozburun (N 40°00'45,2" – E 40°33'26,1"), 1960 m, 01.VIII.2004, J. Dils & J. Faes leg. Deposited in the Institute of Systematics and Population Biology, Zoological Museum, Amsterdam.

Paratypes, 1♂: Turkey, Karaman province, Yellibeli Geçidi (N 36°49'31,3" – E 32°55'58,5"), 1910 m, 03.VII.2005, J. Dils & J. Faes leg. – 1♂: Turkey, Karaman province, Yellibeli Geçidi (N 36°50'26,8" – E 32°55'56,6"), 1730 m, 04.VII.2005, J. Dils & J. Faes leg. – 1♂: Turkey, Karaman province, Yellibeli Geçidi (N 36°50'23,8" – E 32°55'37,5"), 1770 m, 29.VI.2006, J. Dils & J. Faes leg. Paratypes deposited in the private collection of the author.

## Description

Size. Body length 5.0–5.5 mm – Wing length 3.6–4.2 mm (n=4).

Head: Facial profile moderately produced, distance between facial tubercle and eye margin half the length of the third antennal segment. Face yellow with dark mouth edge and whitish pile. Frontal triangle yellow. Vertex shining black, yellow-white haired and white tomentum anterior to front ocellus. Basal two

segments black, third segment dark, reddish-brown at base and below. Arista orange, shorter than third antennal segment.

**Thorax:** Mesonotum black, metallic with rather heavy granulation. It has two longitudinal and parallel stripes of white tomentum, just exceeding the transverse suture. No whitish spots at the sides of the transverse suture. The hairs on the mesonotum and scutellum are short and semi-addressed, yellow-white colored. Scutellum nearly complete black, only a small yellow coloration at the top.

**Legs:** mainly yellowish, with yellow pile; coxae and trochanters black; fore and mid femora black on basal 1/3; hind femur black on basal 2/3; knees whitish.

**Abdomen (Fig. 1):** Dorsally convex, strongly concave ventrally. The partition of red and black is very variable as shown in fig 1. Tergit 1 is always black, tergite 2 almost black with in some specimen a little red, triangular spot in the middle. Tergite 3 is wholly red, except in most cases, two black spots at sides, tergite 4 red with more or less black colouration in the middle, not reaching the sides of the abdomen. Tergite 5 always red.

**Wing:** hyaline with yellow-brown pterostigma.

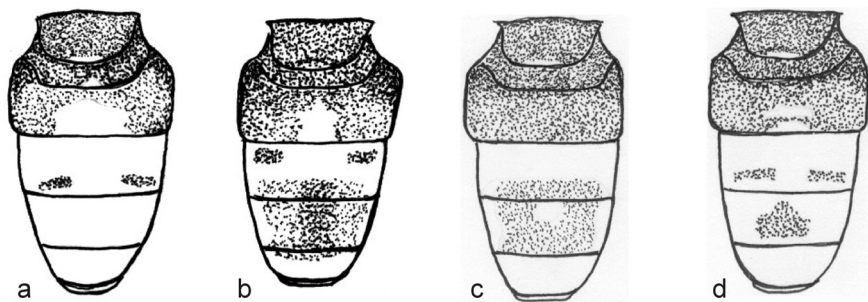
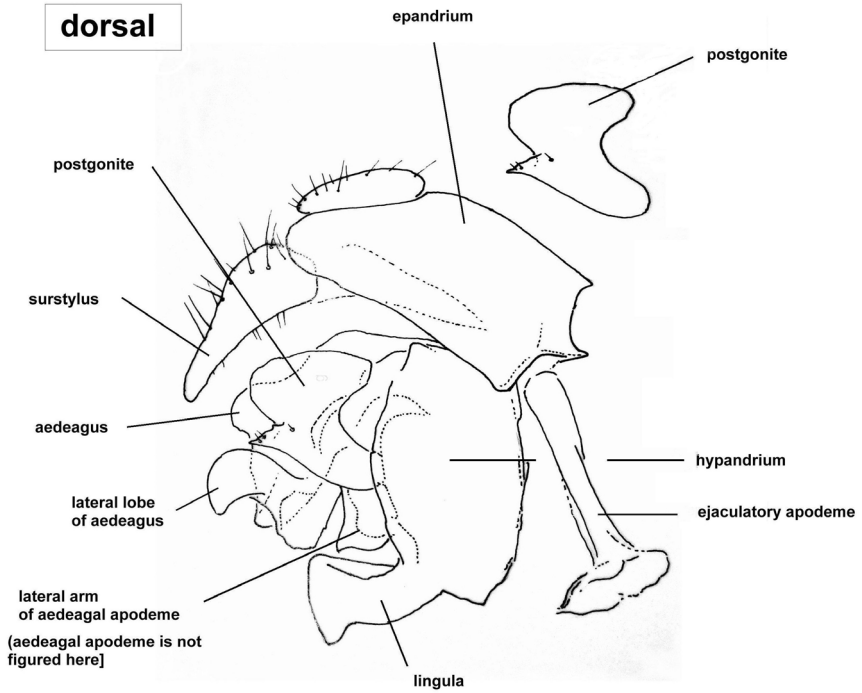


Fig. 1. *Paragus altomontanus* sp. n.; Variation in coloration of abdomen: a.– holotype male; b–d.– Paratypes.

**Genitalia (Figs 2–4):** Surstylus about 0.6× as long as maximum length of epandrium, tapering from base to narrow apex. Posterior lateral margin of hypandrium between lingula and dorsal margin of hypandrium, with a shallow convexity, without spines. Lingula distinct, as usual in the subgenus *Paragus*. Aedeagal apodem with well developed lateral arms; the apices of these arms are visible as pointed sclerites between lingula and postgonite in lateral view. Postgonite short and compact, with a small tooth at the middle of his posterior margin. Lateral lobe of aedeagus of distinct shape, with ventral curved apex. Aedeagus of the typical shape, but in lateral view for the most part hidden behind the postgonite and the lateral lobe of aedeagus.



**ventral**

Fig. 2. *Paragus altomontanus* sp. n.; holotype: genitalia lateral view.

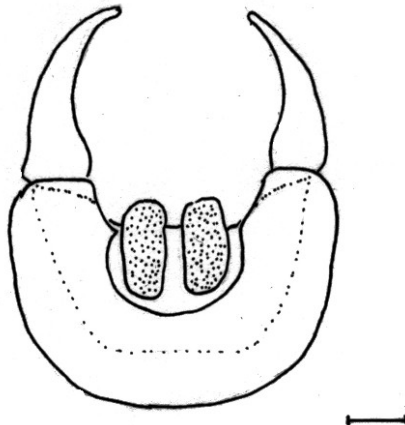


Fig. 3. *Paragus altomontanus* sp. n.; holotype: T9 and surstyli ventral view. Scale bar 0.125  $\mu$ m.

Etymology: This species is named *altomontanus* (literally: from high mountains) because all the specimens were taken around 2000 m in different localities.

### Checklist of Turkish *Paragus* species

Subgenus *Pandasyopthalmus* Stuckenberg, 1954

- P. abrogans* Goeldlin de Tiefenau, 1971
- P. coadunatus* Rondani, 1847
- P. constrictus* Simić, 1986
- P. haemorrhous* Meigen, 1822
- P. tibialis* (Fallèn, 1817)

Subgenus *Paragus* Latreille, 1804

- P. absidatus* Goeldlin de Tiefenau, 1971
- P. albifrons* (Fallèn, 1817)
- P. altomontanus* sp. n.
- P. azureus* Hull, 1949
  - in Turkey ssp. *scrupeus* Stuckenberg, 1954
- P. bicolor* (Fabricius, 1794)
- P. bradescui* Stănescu, 1981
  - = *antoinettae* Goeldlin de Tiefenau & Lucas, 1981
- P. cinctus* Schiner & Egger, 1853
- P. compeditus* Wiedemann, 1830
  - partly sub nom. *aegyptius* Macquart, 1857
- P. faesi* Van de Weyer, 2000
- P. kopdagensis* Hayat & Claussen, 1997
- P. oltenicus* Stănescu, 1977
- P. peccioli* Rondani, 1857
  - = *majoranae* Rondani, 1857 sensu Goeldlin (1976)
- P. quadrifasciatus* Meigen, 1822
- P. romanicus* Stănescu, 1992

It is impossible to make a key to identify all this species, because most of them can only be recognized by the structure of the male genitalia and the females remain unidentifiable. This is certainly so for *altomontanus* and the species belonging to the "bicolor-group" (all Turkish species of subgenus *Paragus* except *azureus* and *faesi*).

### Acknowledgements

I am especially indebted to Jos Dils and Jeannine Faes (Belgium) for collecting the specimen in Turkey and Claus Claussen (Germany) for helping me with the description of the genitalia.

## Bibliography

- Goeldlin de Tiefenau, P. 1976. Révision du genre *Paragus* (Dipt. Syrphidae) de la région paléarctique occidentale. — *Mitteilungen der Schweizerischen Entomologischen Gesellschaft* **49**: 79–108.
- Goeldlin de Tiefenau, P. & Lucas J. A. W. 1981. *Paragus* (Dipt., Syrphidae) de Corse et de Sardaigne. — *Mitteilungen der Schweizerischen Entomologischen Gesellschaft* **54**: 389–397.
- Hayat, R. & Claussen, C. 1997. A new species and new records of the genus *Paragus* Latreille, 1804 from Turkey (Diptera: Syrphidae). — *Zoology in the Middle East* **14**: 99–108.
- Kaplan, M. & Thompson, F. C. 1981. New Syrphidae from Israel (Diptera). — *Proceedings of the Entomological Society of Washington* **83**(2): 198–212.
- Marcos-García, A. 1986. Citas de interés del género *Paragus* Latreille, 1804 en la Península Ibérica y descripción de *Paragus vandergooti* sp. nov. (Diptera, Syrphidae) — *Acta VIII Jornadas de la Asociación española de Entomología*, Sevilla: 765–772.
- Marcos-García, M. & Rojo, S. 1994. *Paragus hyalopteri* n. sp. – an aphidophagous hoverfly (Dipt.: Syrphidae) attacking the Mealy Plum Aphid (Hom.: Aphididae). — *Entomophaga* **39**: 99–106.
- Simić, S. 1986. *Paragus constrictus* sp. n. and other species of the genus *Paragus* Latreille, 1804 (Diptera: Syrphidae) in Yugoslavia. — *Acta entomologica Jugoslavica* **22**(1-2): 5–10.
- Stănescu, C. 1977. *Paragus oltenicus* n.sp. (Diptera, Syrphidae) aus Rumänien. — *Stud. Comun. Mus. Brukenthal, St. Nat.* **21**: 287–290.
- Stănescu, C. 1981. *Paragus bradescui* sp. n. et *P. majoranae* Rond., 1857 (Dipt., Syrphidae) dans la faune de Roumanie. — *Travaux du Musée d'Histoire naturelle "Grigore Antipa"* **23**: 149–153.
- Stănescu, C. 1991. *Paragus medaea* n. sp. (Dipt., Syrphidae) dans la faune de Roumanie. — *Travaux du Musée d'Histoire naturelle "Grigore Antipa"* **31**: 259–264.
- Stănescu, C. 1992. Sur le genre *Paragus* Latreille, 1804 (Diptera, Syrphidae) en Roumanie — *Travaux du Musée d'Histoire naturelle "Grigore Antipa"* **32**: 197–209.
- Van de Weyer, G. 2000. A new syrphid fly species of the *Paragus serratus* complex from Turkey (Diptera: Syrphidae). — *Phegea* **28**(4): 149–152.
- Vujić, A. et al. 2008. Systematics and phylogeny of the tribe Paragini (Diptera; Syrphidae) based on molecular and morphological characters. — *Zoological Journal of the Linnean Society* **152**: 507–536.
-