

Corrections concerning the holotype and paratypes of *Melitaea timandra* (Lepidoptera: Nymphalidae, Nymphalinae)

John G. Coutsis

Abstract. Errors and inconsistencies regarding the designation of the holotype and the paratypes of *Melitaea timandra* Coutsis & van Oorschot, 2014 are being detected and corrected.

Samenvatting. Fouten en onverenigbaarheden betreffende het vastleggen van het holotype en de paratypes van *Melitaea timandra* Coutsis & van Oorschot, 2014 worden vermeld en verbeterd.

Résumé. Des erreurs et des inconsistances concernant la désignation du holotype et des paratypes de *Melitaea timandra* Coutsis & van Oorschot, 2014 sont notées et corrigées.

Key words: *Melitaea* – *timandra* – *lutko* – holotype re-designation – paratype re-designation – Turkmenistan – Afghanistan.

Coutsis J. G.: 4 Glykonos Street, GR-10675 Athens, Greece. kouts@otenet.gr

Introduction

A series of inconsistencies and errors in van Oorschot & Coutsis (2014) regarding the holotype and paratypes of *M. timandra*, which were kindly brought to my attention by Kirill Kolesnichenko, made it imperative that I make the necessary corrections and put some order to this unfortunate imbroglio.

Corrections

Holotype and paratypes of *M. timandra*.

The following data are provided on p. 72, left column, first paragraph under heading: *Melitaea timandra* Coutsis & van Oorschot, sp. nov.: "Type locality: Turkmenistan, Kopet Dagh, Sary-Yazi, 22.iv.1993. Type material: ♂ holotype (coll. de Heer), paratypes 1♂, 3♀ same data as for holotype (ZMA); 2♂, 2♀, Kara-Kala, 20.iii.1991; 1♂, same locality but 10.iv.1992; 2♂ Afghanistan, W. Koh-i-Baba Mts., Joshanak Valley, 1700 m, 14.vi.1960 (all ZMA); 1♂, 1♀ (coll. Tshikolovets), 1♂, 1♀ (coll. Devyatkin)".

This should now be corrected to: "Type locality and date of capture: Turkmenistan, Kopet Dagh, Kara-Kala, 20.iii.1991. Type material: ♂ **holotype:** HO 0549 (ZMA), adult: pl. 14, fig. 23, genitalia: pl. 186; ♂ **paratypes:** HO 0279 (ZMA), Turkmenistan, Sary-Yazi, 22.iv.1993, genitalia: pl. 187, figs. 2, 15; HO 0660 (ZMA), Turkmenistan, Kopet Dagh, Kara-Kala, 20.iii.1993, genitalia: pl. 187, figs. 3, 8, 14; HO 1102 (ZMA), Turkmenistan, Kopet Dagh, S.W. of Monjukly Mt. range, Saf Kara-Kala, 10.iv.1992; HO 1206 (ZMA), Turkmenistan, Sary-Yazi, 22.iv.1993, adult: pl. 15, fig. 1, genitalia: pl. 187, figs. 4, 5, 9; HO 1207 (ZMA), Turkmenistan, Sary-Yazi, 18.iv.1992, genitalia: pl. 187, figs. 6, 11; HO 1208 (ZMA), Turkmenistan, Sary-Yazi, 18.iv.1992, genitalia: pl. 187, figs. 1, 10; (HO 0550; ZMA), Afghanistan, Bamyan, Koh-i-Baba Mts., Joshanak valley, 2800 m, 14.vi.1960; HO 0846 (ZSM), Afghanistan, Herat, Kala Nao, Kashka pass, 2300 m, 18.v.1956; HO 0888 (ZMA), Afghanistan, Bamyan, Koh-i-Baba Mts., Joshanak valley, 2800 m, 14.vi.1960, adult: pl. 14, fig. 25, genitalia: pl. 187, figs. 7, 12, 13; ♀ **paratypes:** 3 specimens (ZMA), Turkmenistan,

Kopet Dagh, Sary-Yazi, 22.iv.1993; 2 specimens (ZMA), Turkmenistan, Kara-Kala, 20.iii.1991".

List of studied specimens (pp. 325–356).

The following data provided in this list should be corrected:

p. 330, HO 0279, column 5: change "Mary-Yazi" to "Sary-Yazi".

p. 350, HO 1206, HO 1207, HO 1208, column 5: change "Mary-Yazi" to "Sary-Yazi".

Colour plate captions (pp. 161–172).

The following data provided in these captions should be corrected:

p. 167, pl. 14, fig. 23, HO 0549: add "genitalia: pl. 186; holotype".

p. 167, pl. 14, fig. 25, HO 0888: add "genitalia: pl. 187, figs. 7, 12, 13; paratype".

p. 167, pl. 15, fig. 1, HO 1206: change "Mary-Yazi" to "Sary-Yazi", and add "genitalia: pl. 187, figs. 4, 5, 9; paratype".

Genitalia plate captions (pp. 176–324).

The following data provided in these captions should be corrected:

p. 183, pl. 44, figs. 16, 17: change "16, 17. *M. lutko*" to "16. *M. timandra*. 17. *M. lutko*".

Note

Females, other than those from Turkmenistan where only *M. timandra* appears to be present, have been omitted from the paratype series for fear of confusing them with syntopic *Melitaea lutko* Evans, 1932 or with intermediates between the two.

Acknowledgements

I am deeply indebted to Kirill Kolesnichenko for having discovered the inconsistencies concerning the *M. timandra* type series and for having promptly informed me about them. My sincerest thanks are also due to Willy De Prins for his advise over how to go about correcting this unfortunate issue.

References

van Oorschot H. & Coutsis J. G. 2014. *The genus Melitaea Fabricius, 1807 (Lepidoptera: Nymphalidae, Nymphalinae). Taxonomy and systematics with special reference to the male genitalia.* — Tshkolovets Publications, Pardubice, Czech Republic.

Erratum

In the paper by Coutsis J. G. 2016. The male and female genital structures of skippers currently placed in the genus *Carcharodus* Hübner, [1819] and their taxonomic significance (Lepidoptera: Hesperiiidae, Pyrginae). — *Phegea* **44**(3): 66–75, fig. 10 has been duplicated in fig. 11. Hereunder, both figures 10 and 11 are reproduced. Readers are kindly requested to replace fig. 11 on p. 71 of the above mentioned by correct one printed below.

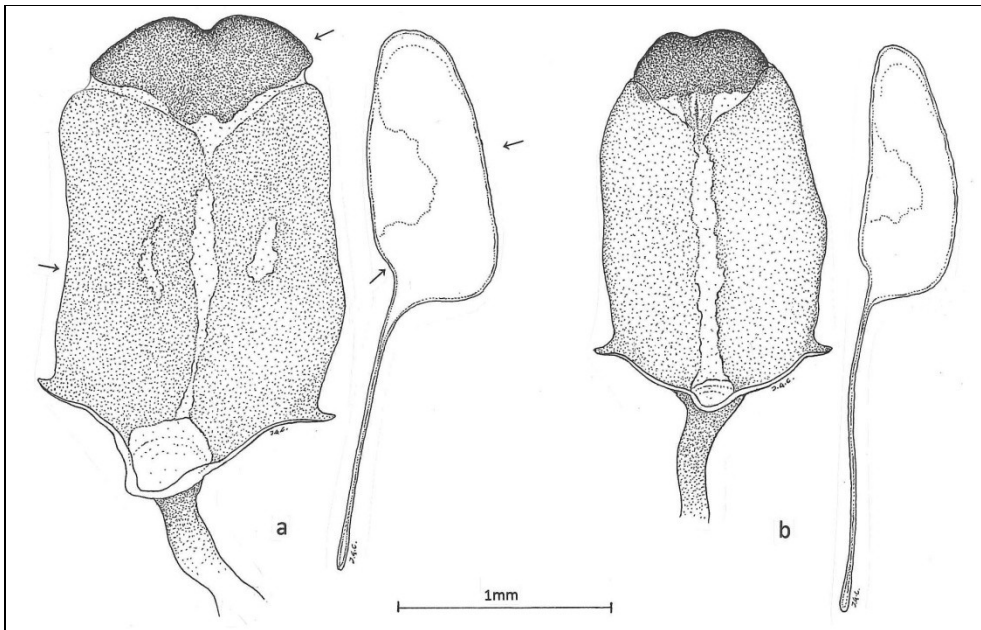


Fig. 10. Genitalia components of female *Reverdinus* species: ventral aspect of lamellae postvaginales (left), together with lateral aspect of exterior face of left papilla analis and its apophysis posterioris (right). a. *R. (R.) floccifera*, Greece, Makedhonia, Rodhópi Mts., 1000–1200m, 10.vii.2000. Gen. prep. No. 5545. b. *R. (R.) orientalis*, Greece, Pelopónnisos, Mt. Trahí, Artemíssio Range, 1200 – 1250 m, 7.vii.2014. Gen. prep. No. 5544.

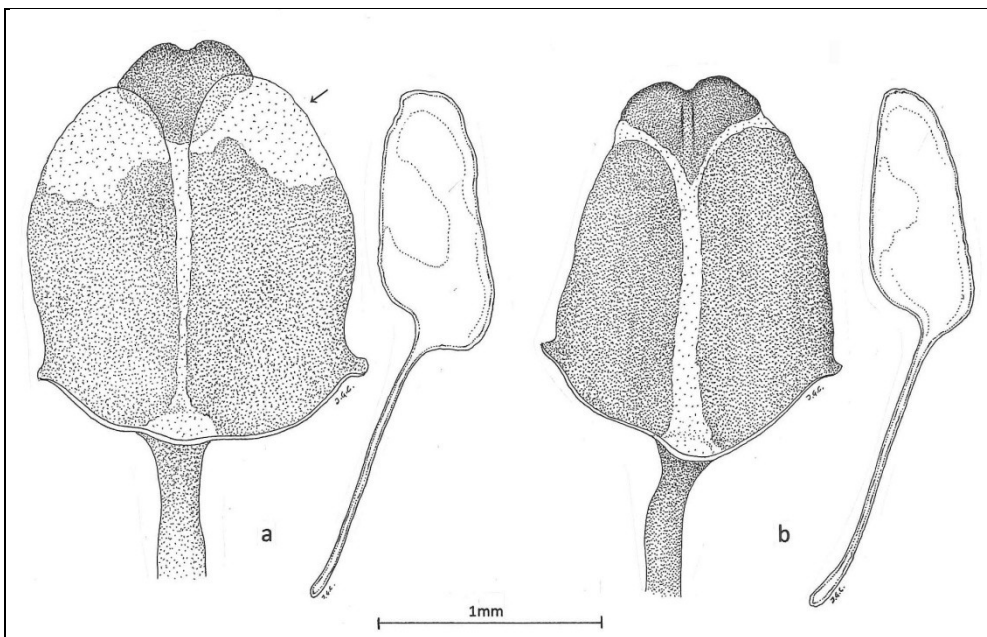


Fig. 11. Genitalia components of female *Reverdinus* species: ventral aspect of lamellae postvaginales (left), together with lateral aspect of exterior face of left papilla analis and its apophysis posterioris (right). a. *R. (R.) dravira*, Iran, Khorasan, Bonjurd, Baba Aman, 1000–1100m, 4.vi.1973, RMNH. INS. 9000905. Gen. prep. No. 5615. b. *R. (R.) baeticus*, Spain, Guenza, Castilla, RMNH. INS. 9000902. Gen. prep. No. 5614.