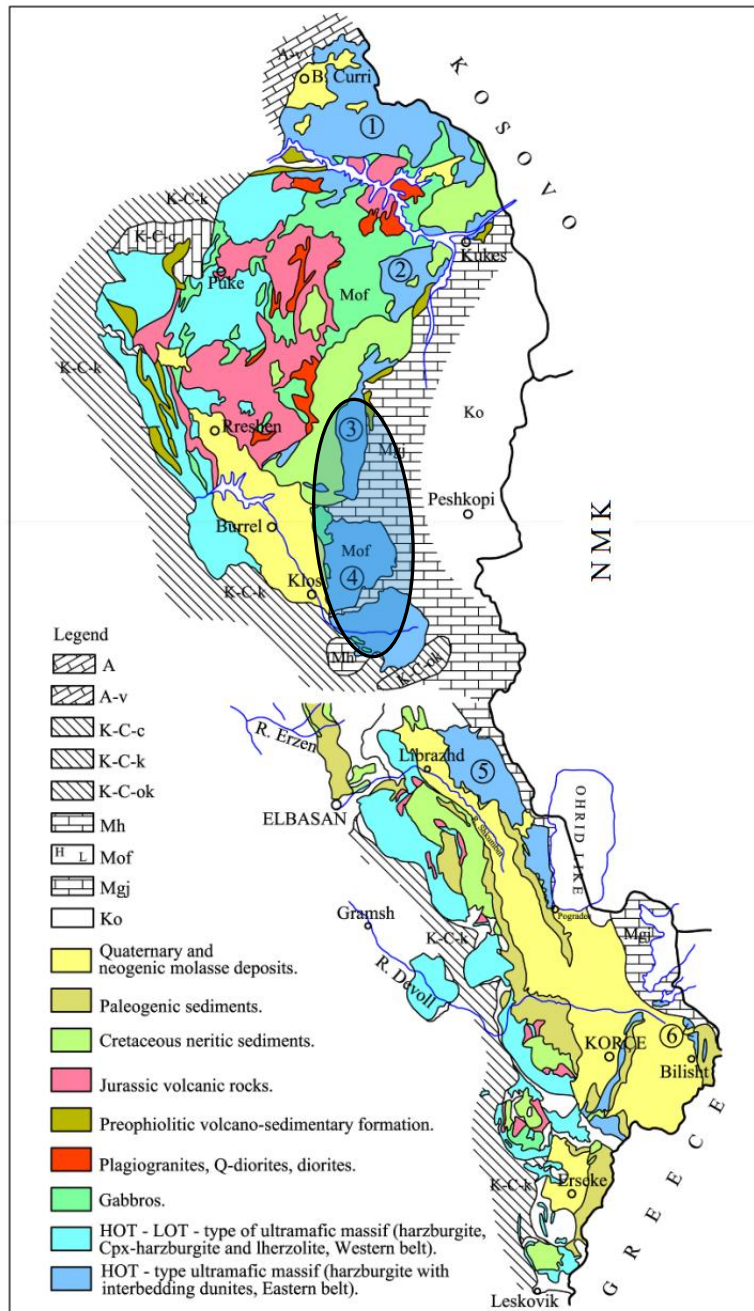


Suppl. Fig. 2. Albanian ophiolitic formation with indication of the Eastern belt of the Mitridita zone



Legend:

A: Albanian Alps; K-C: Krasta-Cukali zone; **M: Mirdita zone: Mof: Mirdita ophiolites**; Ko: Korabi zone.

Ultramafic massifs, eastern ophiolitic belt: 1: Tropoja-Has, 2: Kukesi, **3: Lura**, **4: Bulqiza**, 5: Shebenik-Pogradeci, 6: Bitincka.

○ : distribution of *P. misjai sp. nova* in the Eastern ophiolitic belt of the Mirdita zone, massifs near Lurë and Bulqizë

Figure adapted from: Çina, 2016. On the relatively compositional homogeneity of Albanian Eastern Belt. Bulletin of the Geological Society of Greece 50, 1789-1798